

# GIWW - AR TO CR CUT P-1 THRU CUT P-41 PINELLAS COUNTY, FLORIDA EXAMINATION SURVEY FY20 9-FOOT PROJECT

### SURVEY NOTES

- REFER TO SURVEY NO. 20-114.
- SOUNDINGS ARE IN FEET AND TENTHS AND REFER TO NOAA'S REPORTED MEAN LOWER LOW WATER (MLLW) OF THE 1983-2001 TIDAL EPOCH.
- TIDAL REDUCTIONS WERE OBTAINED UTILIZING A REAL-TIME KINEMATIC (RTK) GPS AND REFERENCED TO MLLW UTILIZING A HYPACK KINEMATIC TIDE DATUM (KT) MODEL. KTD FILE NAME IS: "SPC-FL-WEST-2010-12-07.KTD".
- ALL ELEVATIONS ARE BELOW THE CHART DATUM UNLESS PRECEDED BY A (+) SIGN.
- PLANE COORDINATES ARE BASED ON THE TRANSVERSE MERCATOR PROJECTION FOR THE WEST ZONE OF FLORIDA AND REFERENCED TO THE NORTH AMERICAN DATUM OF 1983 (NAD83).
- ALL STATIONING REFERS TO THE CENTERLINE OF THE CHANNEL.
- THIS SURVEY WAS PERFORMED USING REAL-TIME KINEMATIC (RTK) GPS POSITIONING WITH THE FOLLOWING REFERENCE BASE LOCATIONS:  
 REFERENCE BASE LOCATED AT "THFO ARP" (PID: BBGK81)  
 REFERENCE BASE LOCATED AT "NOAA C" (PID: AG2514)  
 REFERENCE BASE LOCATED AT "JP 101" (PID: BBCB34)  
 REFERENCE BASE LOCATED AT "PCDSM GPS 22" (PID: DF5801)  
 REFERENCE BASE LOCATED AT "HOG ISLAND B" (PID: AL0220)  
 REFERENCE BASE LOCATED AT "USCG SAND KEY 1" (PID: BBDG31)  
 REFERENCE BASE LOCATED AT "872 6904 C" (PID: DM3828)
- DEPTHS DEPICTED BY THIS SURVEY ARE REFERENCED TO MLLW, TIDAL EPOCH 1983-2001 AS REPORTED BY THE NATIONAL OCEANIC AND ATMOSPHERIC ADMINISTRATION (NOAA). A MODIFIED VERSION OF NOAA'S DATUM MODEL WAS USED TO CALIBRATE TO THE PUBLISHED MLLW HEIGHTS OF THE BENCHMARKS BELOW.  
 NOAA TIDAL STATION 872-6620 FOR CUTS P1 AND P2 (PID: AG5288)  
 NOAA TIDAL STATION 872-6428 FOR CUTS P2A THRU P15 (PID: AG5268)  
 NGS BENCHMARK FOR CUTS P16 THRU P26 (PID: DM3817)  
 NGS BENCHMARK FOR CUTS P27 THRU P32 (PID: AG0714)  
 NOAA TIDAL STATION 872-6724 FOR CUTS P33 THRU P37 (PID: AG6374)  
 NOAA TIDAL STATION 872-6761 FOR CUTS P38 THRU P41 (PID: AL6289)  
 NOAA TIDAL STATION 872-6924 FOR CUT P41 STA 268+00 - 350+00 (PID: AL0818)
- VERTICAL MEASUREMENTS WERE MADE USING A R2 SONIC 2024 MULTI-BEAM OPERATING AT 240 KHZ. ALL SOUNDINGS SHOWN ARE IN HIGH FREQUENCY.

VESSEL	DATE OF SURVEY	CUT
SB-52	02 APR 2020	P1
SB-52	08 APR 2020	P2 STA 0+00 - 215+00
SB-52	22 APR 2020	P2 STA 215+00 - 280+00
SB-52	28 APR 2020	P2A THRU P9
SB-52	29 APR 2020	P10 THRU P15
SB-52	05 MAY 2020	P16 THRU P26
SB-52	06 MAY 2020	P27 THRU P32
SB-52	07 MAY 2020	P33 THRU P37
SB-52	19-20 MAY 2020	P38A THRU P41

LEGEND	
△	MONUMENT
⚓	LIGHTED BEACON
■	GREEN DAYBEACON
■	RED DAYBEACON
⬇	RED LIGHTED BUOY
⬇	GREEN LIGHTED BUOY
⬇	CAN BUOY
⬇	NUN BUOY
⊕	TIDE STAFF
8	PROJECT DEPTH

US Army Corps of Engineers  
Jacksonville District  
SAFETY ON THIS JOB  
DEPENDS ON YOU

---

GULF INTRACOASTAL WATERWAY  
 CALOOSAHATCHEE RIVER  
 PINELLAS COUNTY, FLORIDA

**HYDROGRAPHIC EXAM SURVEY FY20  
9-FOOT PROJECT**  
 INDEX, LOCATION AND INDEX  
**MAP**

DEPARTMENT OF THE ARMY  
 JACKSONVILLE DISTRICT, CORPS OF ENGINEERS  
 JACKSONVILLE, FLORIDA

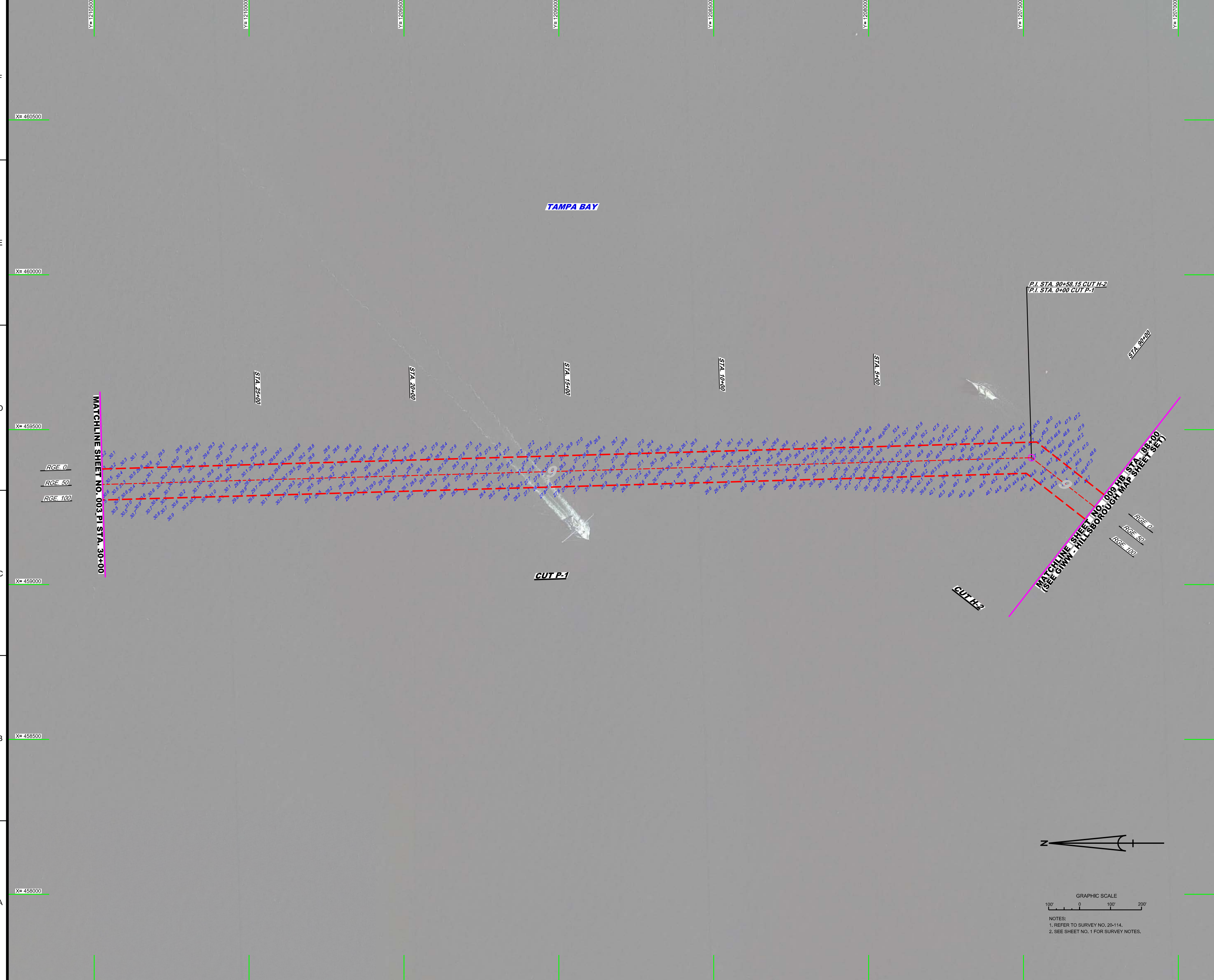
---


Scale: AS SHOWN

Drawing no. **1**

SHEET 01 OF 78

10 9 8 7 6 5 4 3 2 1



 <b>US Army Corps of Engineers</b> Jacksonville District SAFETY ON THIS JOB DEPENDS ON YOU			

DEPARTMENT OF THE ARMY  
 JACKSONVILLE DISTRICT, CORPS OF ENGINEERS  
 JACKSONVILLE, FLORIDA

Checked by: GHR	Designed by: WRM
Design Date: MAY 2020	Date Plotted: MAY 2020

GULF INTRACONASTAL WATERWAY  
 CALOOSAHATCHEE RIVER  
 PINELLAS COUNTY, FLORIDA

**HYDROGRAPHIC EXAM SURVEY FY20**  
**9-FOOT PROJECT**  
 STA. 88+00 CUT H2 THRU STA. 30+00 CUT P-1  
**PLAN**

Scale: AS SHOWN

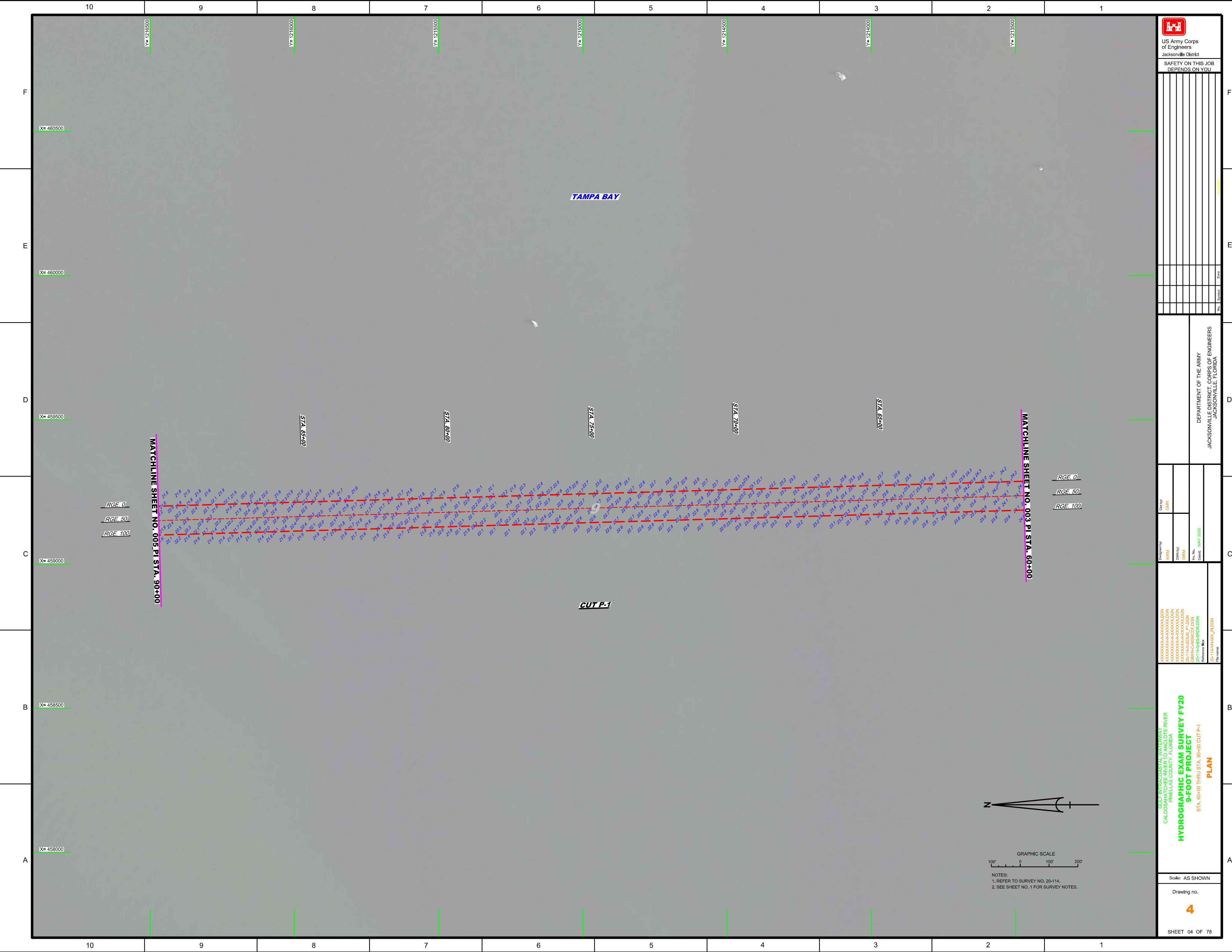
Drawing no.

**2**

SHEET 02 OF 78

10 9 8 7 6 5 4 3 2 1





**US Army Corps of Engineers**  
Jacksonville District

SAFETY ON THIS JOB DEPENDS ON YOU

No.	Symbol	Zone

DEPARTMENT OF THE ARMY  
JACKSONVILLE DISTRICT, CORPS OF ENGINEERS  
JACKSONVILLE, FLORIDA

Designed by: WRM  
Checked by: GHR  
Date: MAY 2020

GULF INTRACOSTAL WATERWAY (ICW) AT THE RIVER  
CALOOSAHATCHEE RIVER  
PINELLAS COUNTY, FLORIDA

**HYDROGRAPHIC EXAM SURVEY FY20**  
**9-FOOT PROJECT**  
STA. 60+00 THRU STA. 90+00 CUT P-1  
**PLAN**

Scale: AS SHOWN  
Drawing no.  
**4**

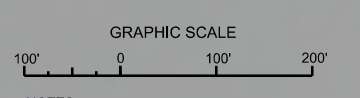
SHEET 04 OF 78

MATCHLINE SHEET NO. 005 PI STA. 90+00

MATCHLINE SHEET NO. 003 PI STA. 60+00

RGE 0  
RGE 50  
RGE 100

RGE 0  
RGE 50  
RGE 100



NOTES:  
1. REFER TO SURVEY NO. 20-114.  
2. SEE SHEET NO. 1 FOR SURVEY NOTES.

TAMPABAY

CUT P-1

STA. 85+00

STA. 89+00

STA. 75+00

STA. 70+00

STA. 65+00

X=460500

X=460000

X=459500

X=459000

X=458500

X=458000

Y=1215500

Y=1215000

Y=1215500

Y=1215000

Y=1215500

Y=1214000

Y=1213500

10

9

8

7

6

5

4

3

2

1

F

E

D

C

B

A

F

E

D

C

B

A

10

9

8

7

6

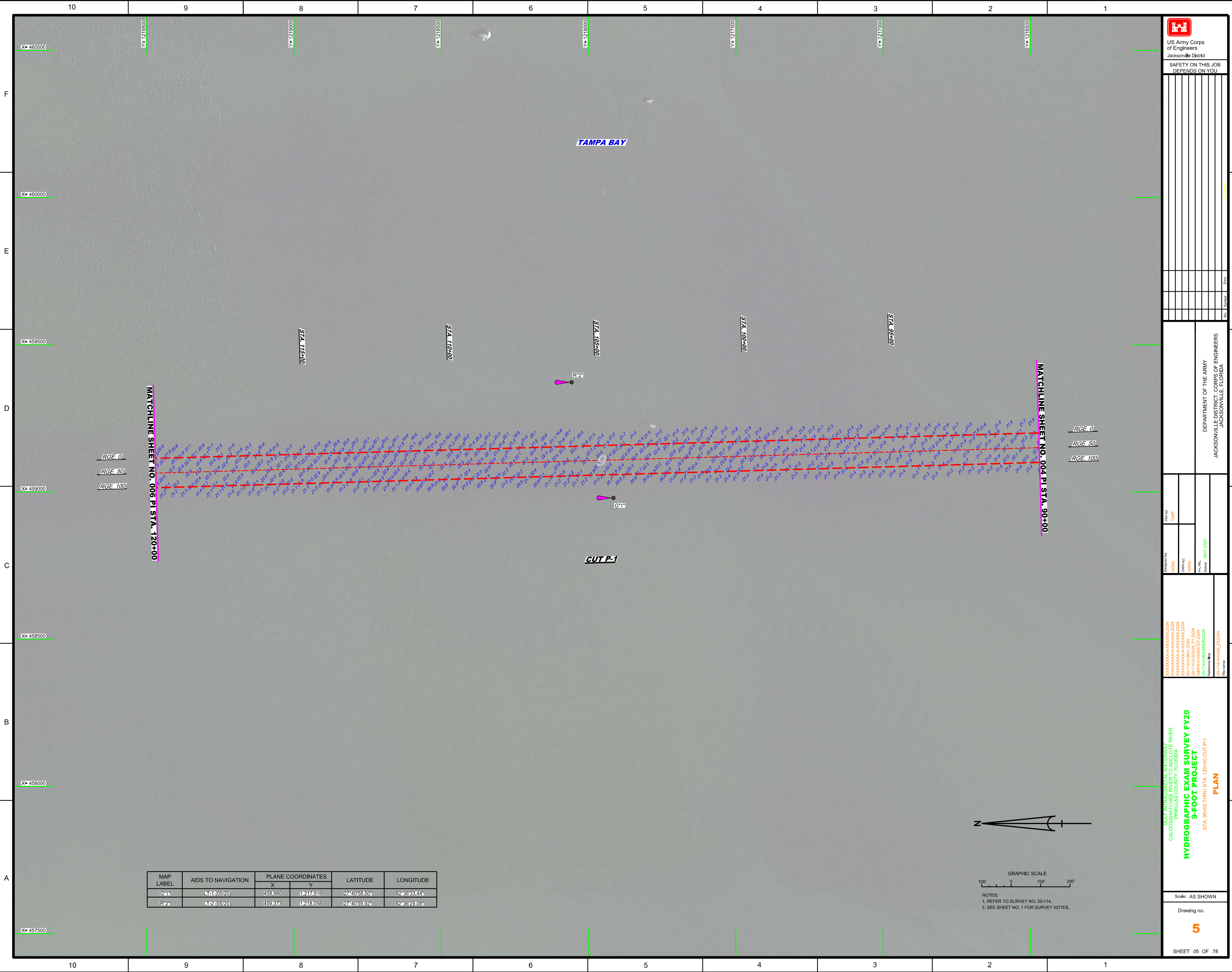
5

4

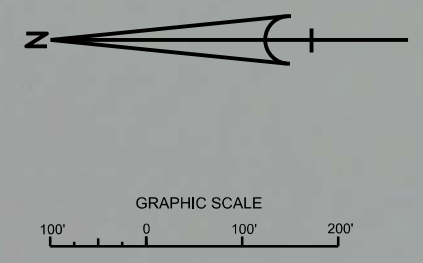
3

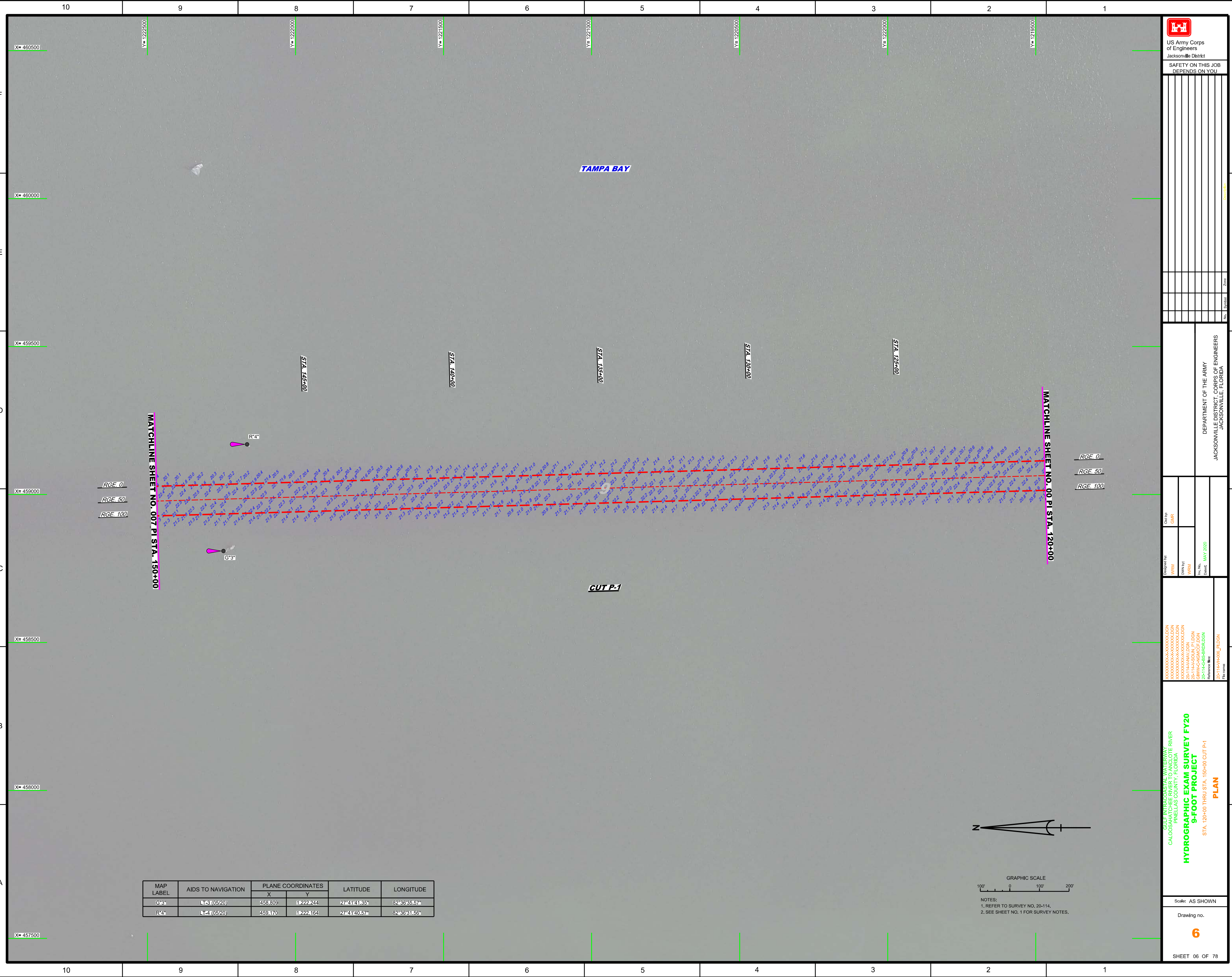
2

1

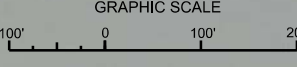


MAP LABEL	AIDS TO NAVIGATION	PLANE COORDINATES		LATITUDE	LONGITUDE
		X	Y		
G11	121 (05/20)	458,980	1217,916	27°40'58.50"	82°36'33.44"
R21	122 (05/20)	459,376	1218,058	27°40'59.92"	82°36'29.08"





MAP LABEL	AIDS TO NAVIGATION	PLANE COORDINATES		LATITUDE	LONGITUDE
		X	Y		
G-3	NT-3 (0520)	458.809	11222.244	27°44'14.85"	82°36'35.57"
R-4	LT-4 (0520)	459.170	11222.164	27°44'14.0.57"	82°36'31.56"



NOTES:  
 1. REFER TO SURVEY NO. 20-114.  
 2. SEE SHEET NO. 1 FOR SURVEY NOTES.

US Army Corps of Engineers  
 Jacksonville District  
**SAFETY ON THIS JOB  
 DEPENDS ON YOU**

NO.	SYMBOL	DESCRIPTION

DEPARTMENT OF THE ARMY  
 JACKSONVILLE DISTRICT, CORPS OF ENGINEERS  
 JACKSONVILLE, FLORIDA

Checked By: GHR  
 Designed By: WRM  
 Drawn By: WRM  
 File No.: 20-114-006  
 Date: MAY 2020

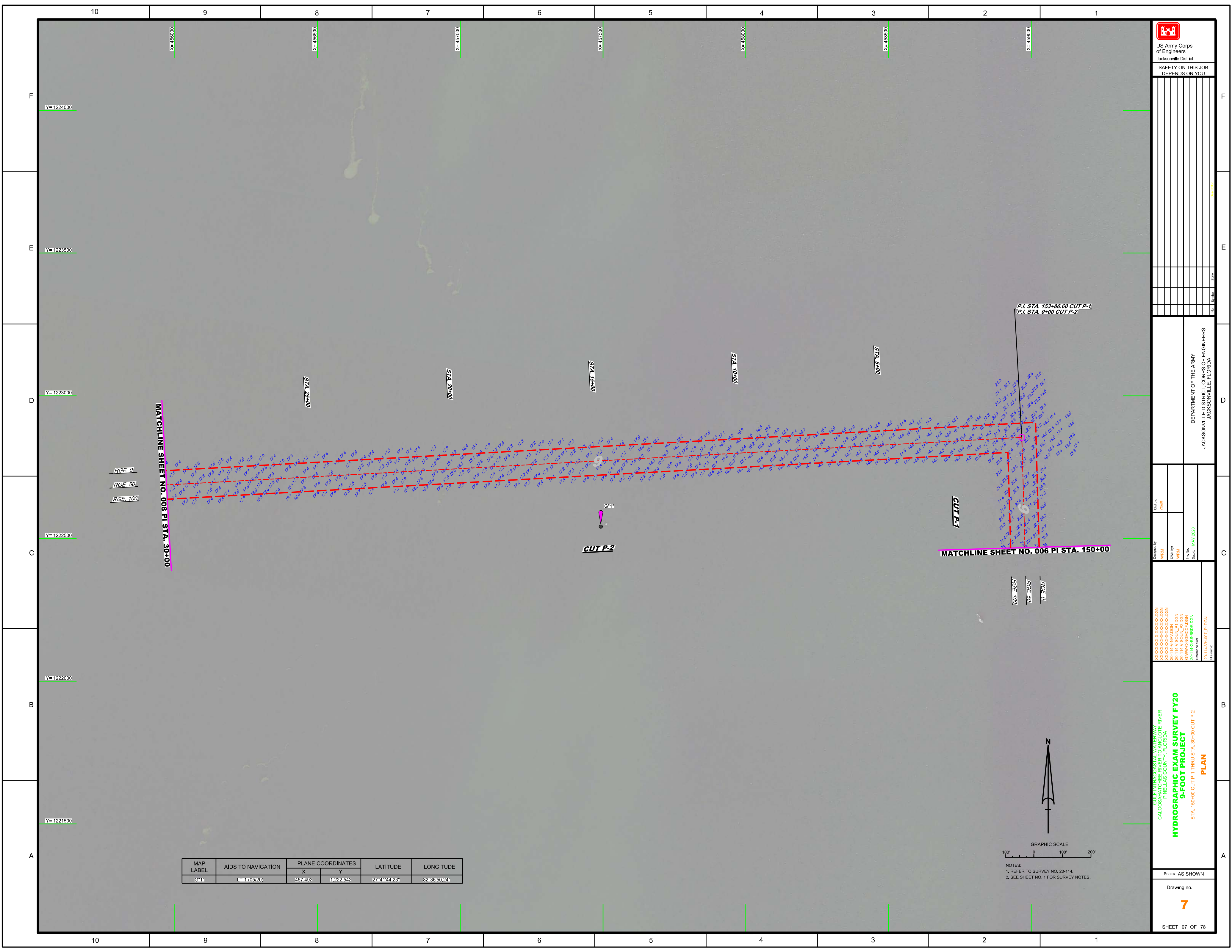
XXXXXXXXXXXXXXXXXXXX.DGN  
 XXXXXXXXXXXXXXXXXXXX.DGN  
 XXXXXXXXXXXXXXXXXXXX.DGN  
 20-114-006-AV.DGN  
 20-114-006-GC.DGN  
 20-114-006-SS-RRAL.DGN  
 20-114-006-FL.DGN

GULF INTERCOASTAL WATERWAY PROJECT  
 CALOOSAHATCHEE RIVER  
 PINELLAS COUNTY, FLORIDA  
**HYDROGRAPHIC EXAM SURVEY FY20**  
**9-FOOT PROJECT**  
 STA. 120+00 THRU STA. 150+00 CUT P-1  
**PLAN**

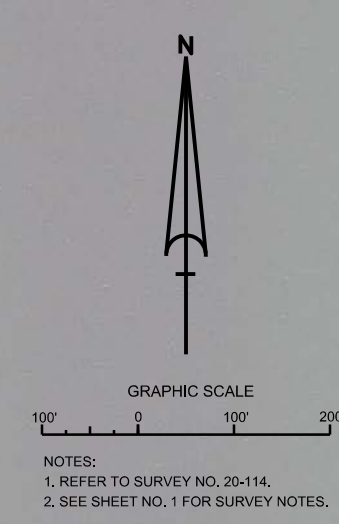
Scale: AS SHOWN

Drawing no.  
**6**

SHEET 06 OF 78



MAP LABEL	AIDS TO NAVIGATION	PLANE COORDINATES		LATITUDE	LONGITUDE
		X	Y		
G+1	LT-1 (05/20)	457,492	1222,532	27°41'43.23"	82°36'50.24"



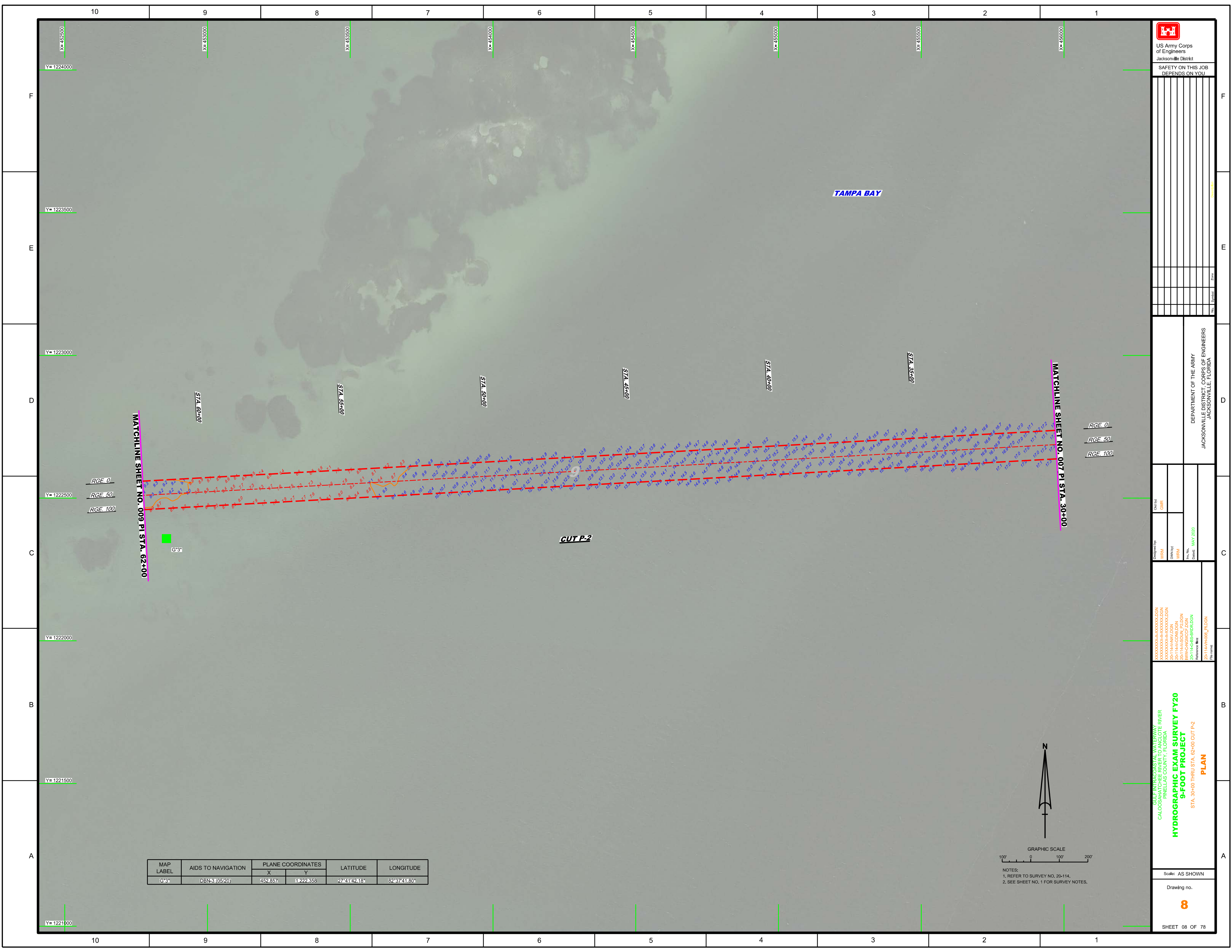
US Army Corps of Engineers  
Jacksonville District  
SAFETY ON THIS JOB  
DEPENDS ON YOU

DEPARTMENT OF THE ARMY  
JACKSONVILLE DISTRICT, CORPS OF ENGINEERS  
JACKSONVILLE, FLORIDA

Checked by: GHR  
Designed by: WRM  
Drawn by: WRM  
File No.: 20-114-0007\_L\_FLDGN  
Date: MAY 2020

GULF INTRACOSTAL WATERWAY  
CALOOSAHATCHEE RIVER  
PINELLAS COUNTY, FLORIDA  
**HYDROGRAPHIC EXAM SURVEY FY20**  
**9-FOOT PROJECT**  
STA. 150+00 CUT P-1 THRU STA. 30+00 CUT P-2  
**PLAN**

Scale: AS SHOWN  
Drawing no. **7**  
SHEET 07 OF 78



NO.	SYMBOL	ZONE

DEPARTMENT OF THE ARMY  
JACKSONVILLE DISTRICT, CORPS OF ENGINEERS  
JACKSONVILLE, FLORIDA

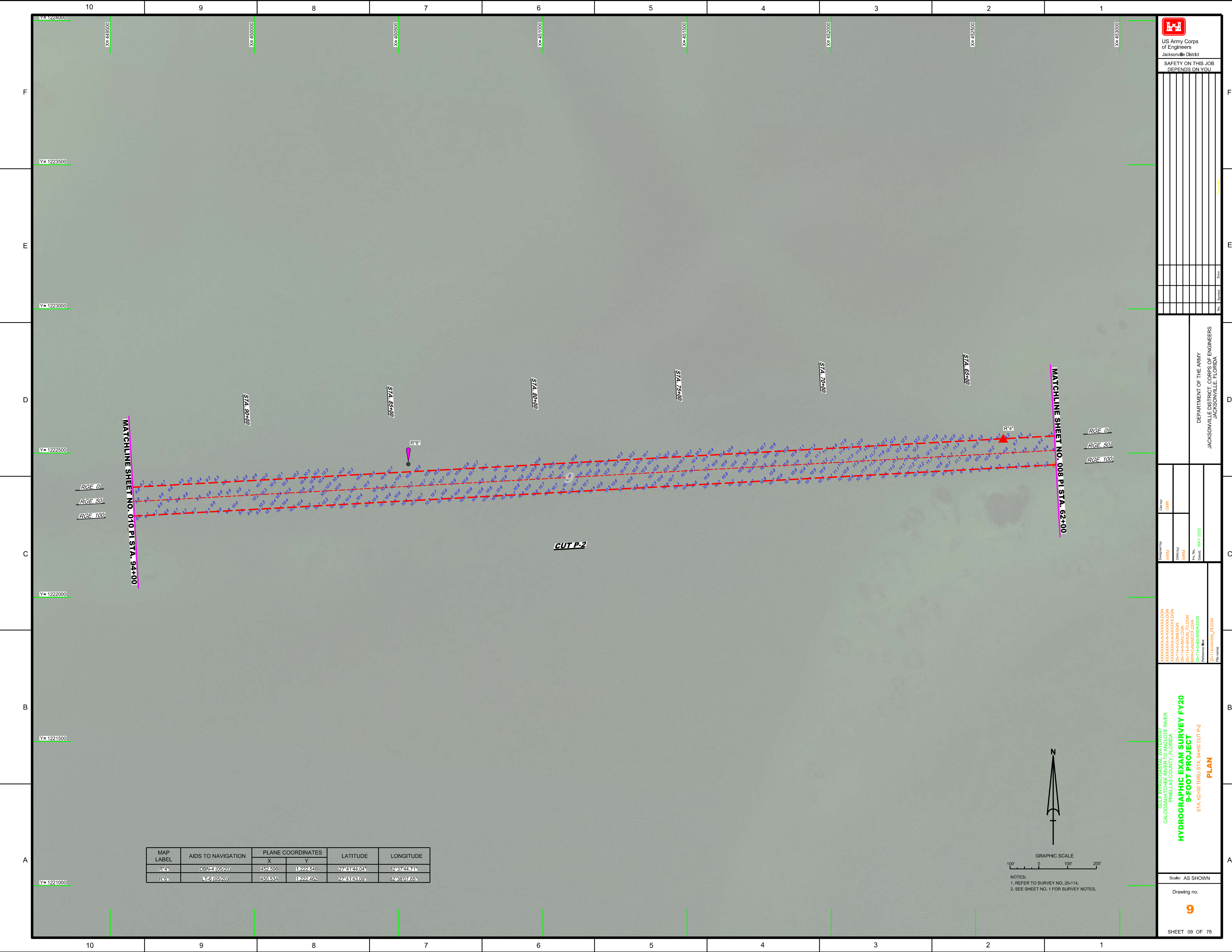
Checked by: GHR
Designed by: WRM
DWV by: WRM
Plot Date: MAY 2020

GULF INTERCOASTAL WATERWAY  
CALOOSAHATCHEE RIVER  
PINELLAS COUNTY, FLORIDA  
**HYDROGRAPHIC EXAM SURVEY FY20  
9-FOOT PROJECT**  
STA. 30+00 THRU STA. 82+00 CUT P-2  
**PLAN**

MAP LABEL	AIDS TO NAVIGATION	PLANE COORDINATES		LATITUDE	LONGITUDE
		X	Y		
G-3*	DBN-3 (05/20)	452,857	11222,358	27°41'42.18"	82°47'41.80"

GRAPHIC SCALE  
0 100' 200'  
NOTES:  
1. REFER TO SURVEY NO. 20-14.  
2. SEE SHEET NO. 1 FOR SURVEY NOTES.





US Army Corps of Engineers  
 Jacksonville District  
 SAFETY ON THIS JOB  
 DEPENDS ON YOU

1			
2			
3			
4			
5			
6			
7			
8			
9			
10			

DEPARTMENT OF THE ARMY  
 JACKSONVILLE DISTRICT, CORPS OF ENGINEERS  
 JACKSONVILLE, FLORIDA

Designed by: WRM  
 Drawn by: WRM  
 Date: MAY 2020  
 Scale: AS SHOWN

XXXXXXXXXXXXXXXXXXXXXXXX  
 XXXXXXXXXXXXXXXXXXXXXXXX  
 XXXXXXXXXXXXXXXXXXXXXXXX  
 2011A-AMV.DGN  
 2011A-AMV.DGN  
 2011A-AMV.DGN  
 2011A-AMV.DGN  
 2011A-AMV.DGN  
 Reference files: 2011A-AMV.DGN  
 2011A-AMV.DGN

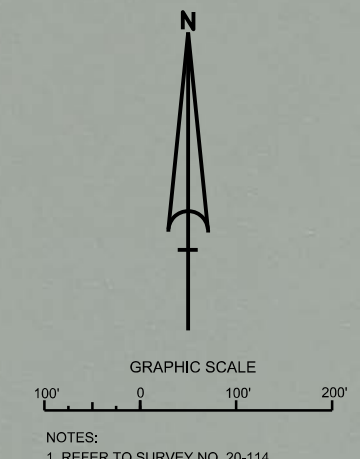
**HYDROGRAPHIC EXAM SURVEY FY20**  
**9-FOOT PROJECT**  
 STA. 62+00 THRU STA. 94+00 CUT P-2  
**PLAN**

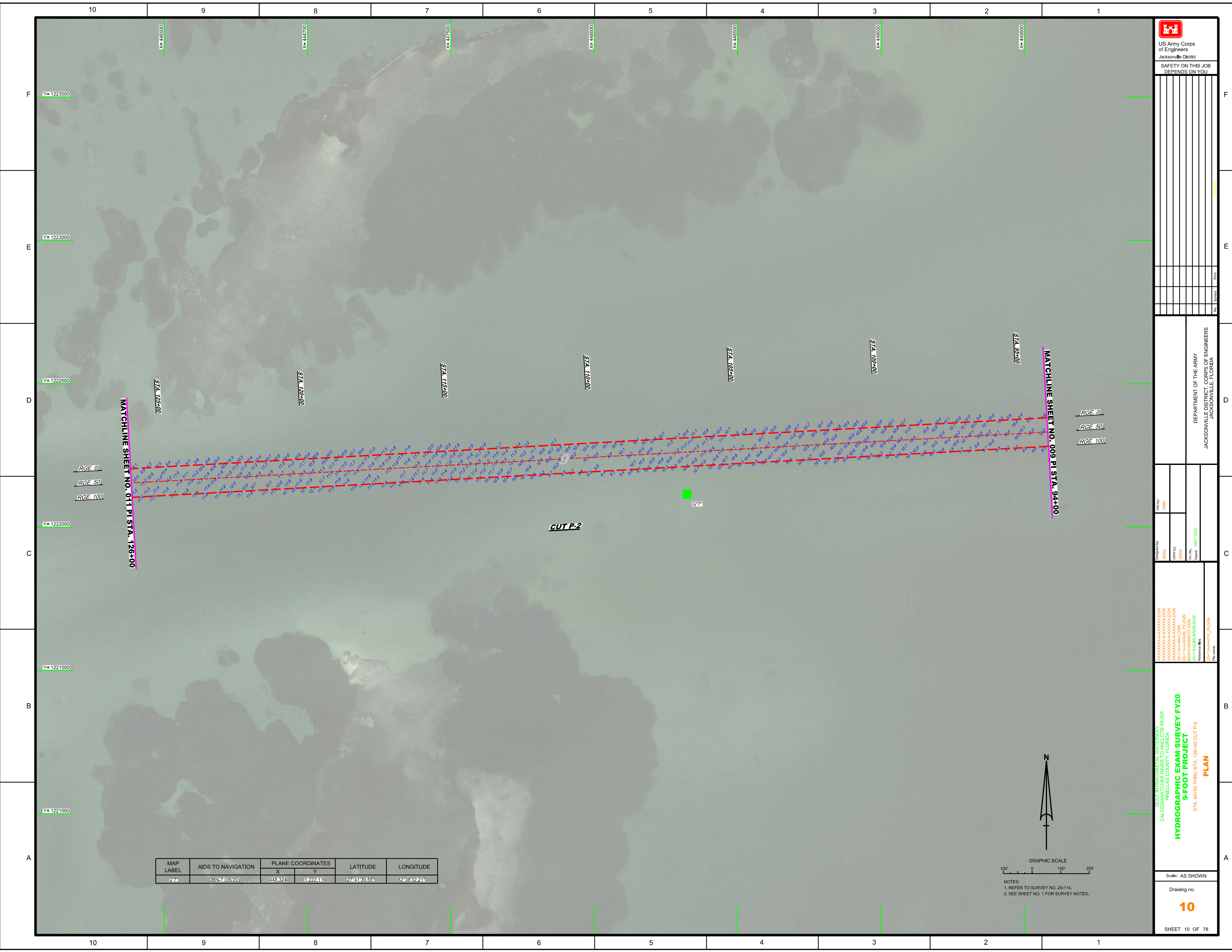
Scale: AS SHOWN

Drawing no. **9**

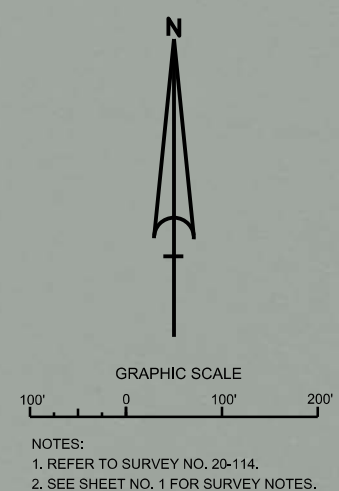
SHEET 09 OF 78

MAP LABEL	AIDS TO NAVIGATION	PLANE COORDINATES		LATITUDE	LONGITUDE
		X	Y		
R4	DBN-4 (0520)	452.696	1222.546	27°41'44.04"	82°37'44.71"
R6	LT-61 (0520)	450.534	1222.462	27°41'43.09"	82°38'07.65"





MAP LABEL	AIDS TO NAVIGATION	PLANE COORDINATES		LATITUDE	LONGITUDE
		X	Y		
G*7	DBN-7 (05/20)	448,324	1,222,116	27°41'39.55"	82°38'32.21"



**US Army Corps of Engineers**  
Jacksonville District

SAFETY ON THIS JOB  
DEPENDS ON YOU

---


---

<p>DEPARTMENT OF THE ARMY JACKSONVILLE DISTRICT, CORPS OF ENGINEERS JACKSONVILLE, FLORIDA</p>	<p>Checked by: GHR Designed by: WRM Drawn by: WRM File No.: 20-114-00-03 Date: MAY 2020</p>
---	---

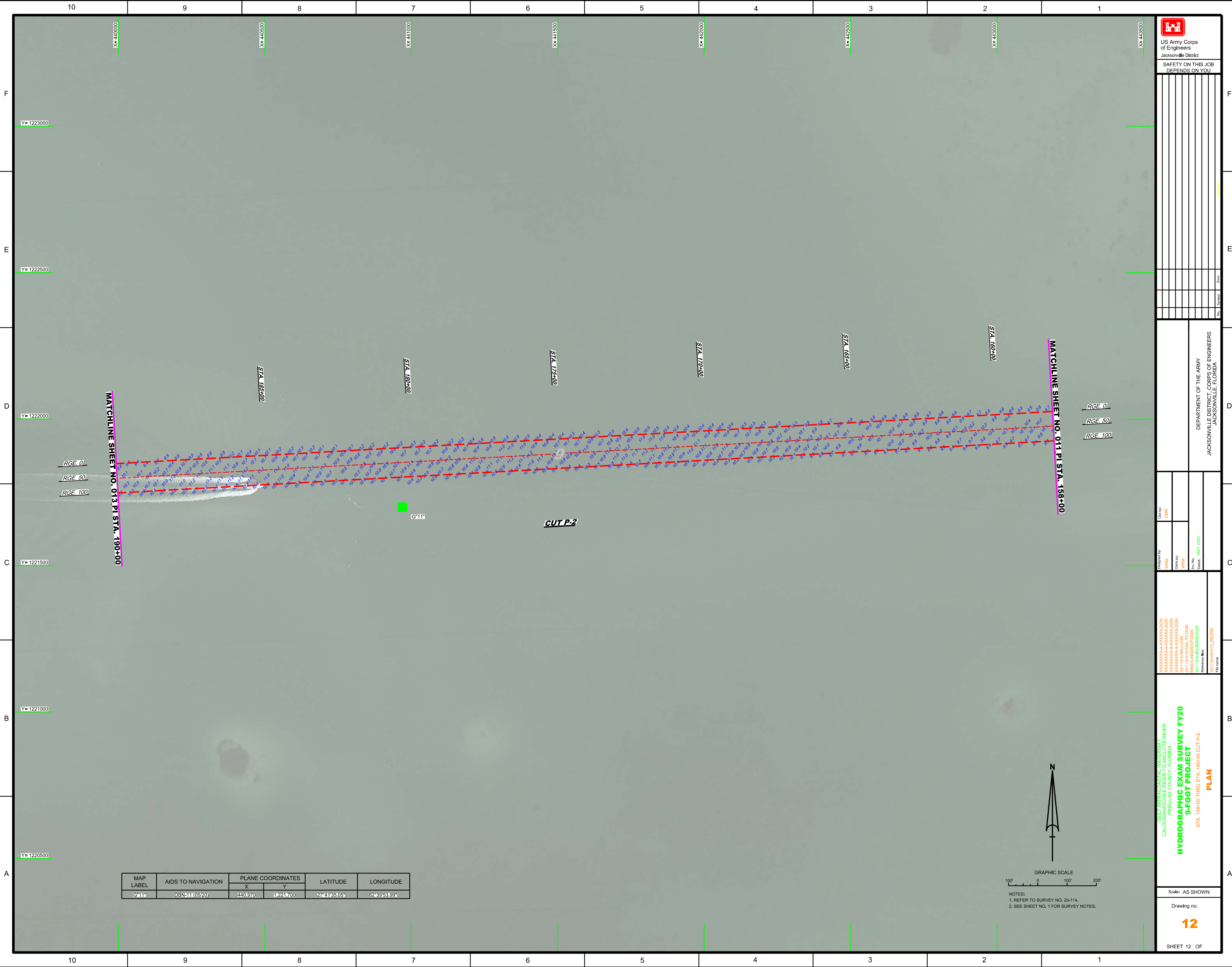
---

<p>GULF INTRACASTAL WATERWAY AT THE RIVER PINELLAS COUNTY, FLORIDA</p> <p><b>HYDROGRAPHIC EXAM SURVEY FY20</b> <b>9-FOOT PROJECT</b></p> <p>STA. 94+00 THRU STA. 126+00 CUT P-2 <b>PLAN</b></p>	<p>XXXXXXXXXXXXXXXXXXXX.DGN XXXXXXXXXXXXXXXXXXXX.DGN XXXXXXXXXXXXXXXXXXXX.DGN 20-114-HAV.DGN HYDROGRAPHIC EXAM 20-114-G-SS-BRIDGES Reference files: 20-114-HAV(0)LL.DGN</p>
---	---

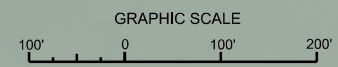
---

<p>Scale: AS SHOWN</p> <p>Drawing no. <b>10</b></p> <p>SHEET 10 OF 78</p>	
---	--





MAP LABEL	AIDS TO NAVIGATION	PLANE COORDINATES		LATITUDE	LONGITUDE
		X	Y		
G*11*	DBN-11 (05/20)	440,970	1,221,700	27°41'35.05"	82°39'53.99"



NOTES:  
 1. REFER TO SURVEY NO. 20-114.  
 2. SEE SHEET NO. 1 FOR SURVEY NOTES.

**US Army Corps of Engineers**  
Jacksonville District

**SAFETY ON THIS JOB DEPENDS ON YOU**

No.	Symbol	Zone

DEPARTMENT OF THE ARMY  
 JACKSONVILLE DISTRICT, CORPS OF ENGINEERS  
 JACKSONVILLE, FLORIDA

Designed by: WRM  
 DWN/PLC  
 WRM  
 File Name: 20-114-00-CUT P-2  
 Date: MAY 2020

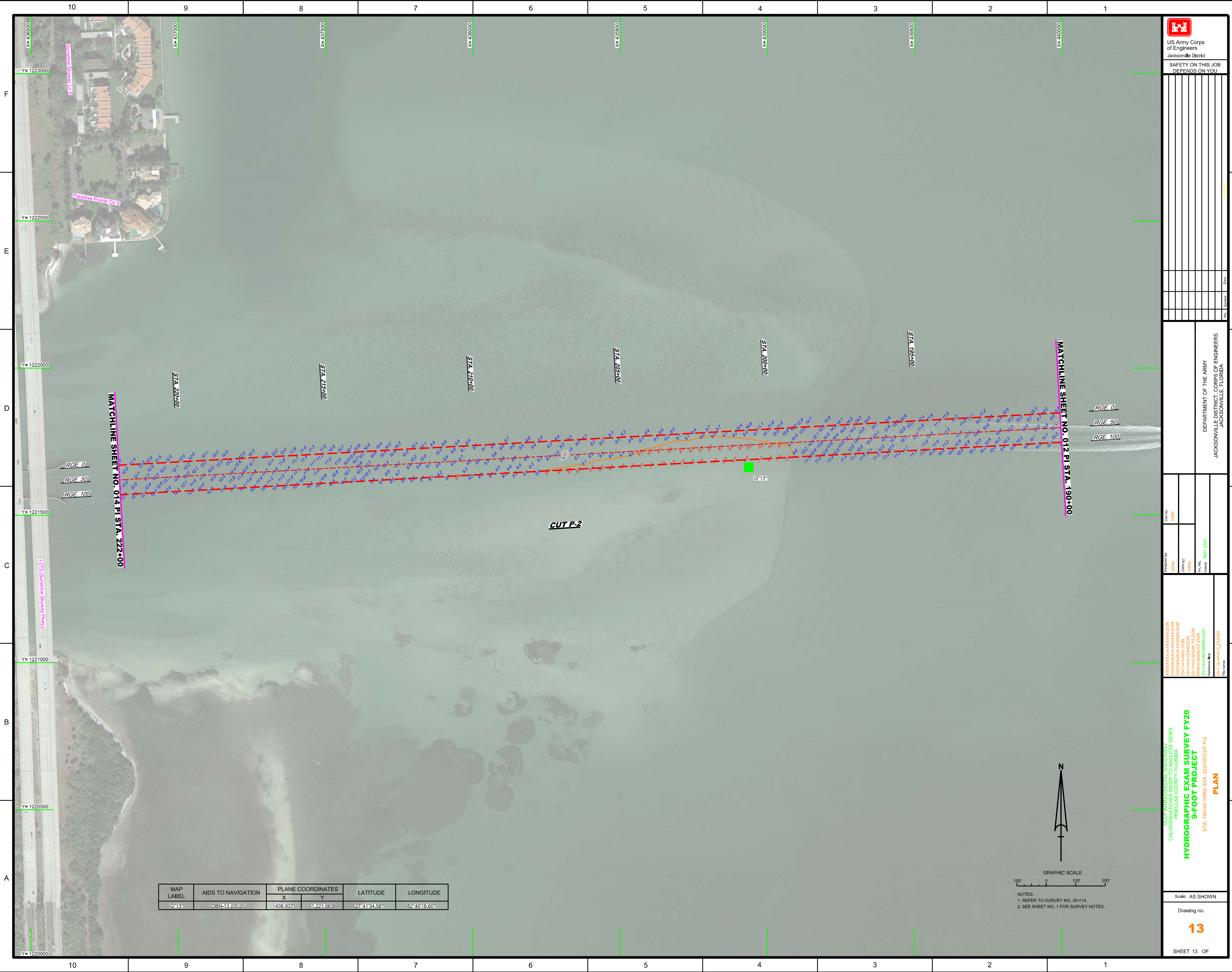
**GULF INTRACOSTAL WATERWAY AT THE RIVER**  
 CALOOSAHATCHEE COUNTY, FLORIDA  
**HYDROGRAPHIC EXAM SURVEY FY20**  
**9-FOOT PROJECT**  
 STA. 188+00 THRU STA. 190+00 CUT P-2  
**PLAN**


Scale: AS SHOWN

Drawing no.

**12**

SHEET 12 OF



  
 US Army Corps  
 of Engineers  
 Jacksonville District  
 SAFETY ON THIS JOB  
 DEPENDS ON YOU

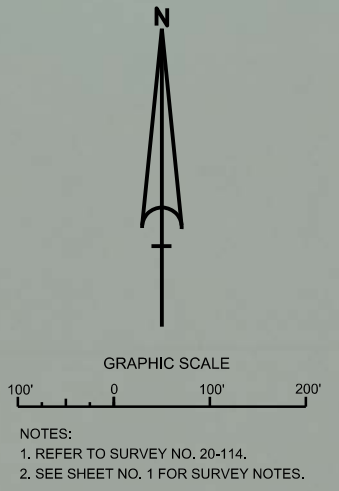
DEPARTMENT OF THE ARMY  
 JACKSONVILLE DISTRICT, CORPS OF ENGINEERS  
 JACKSONVILLE, FLORIDA

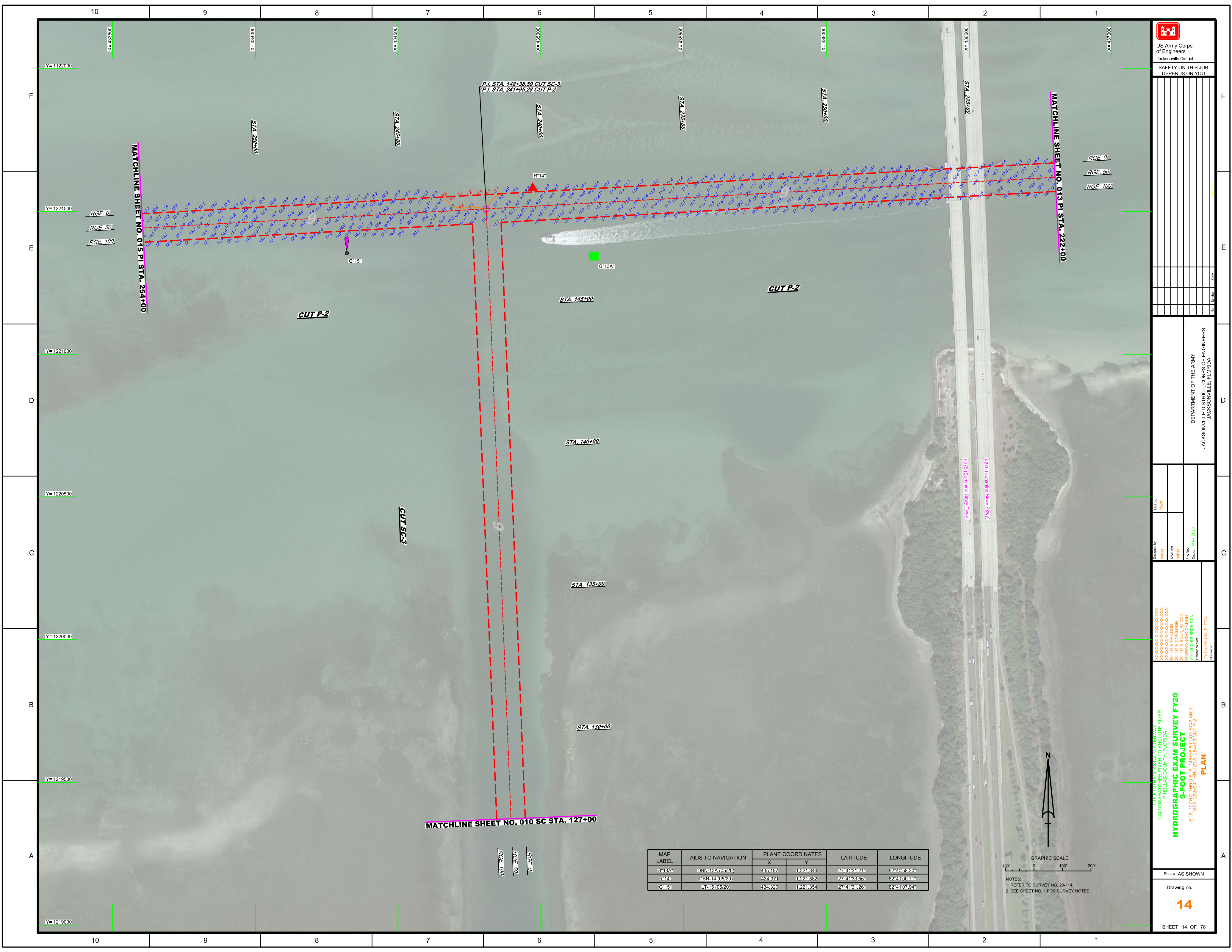
Cut by: GHR  
 Designed by: WRM  
 Drawn by: WRM  
 File No: 20-114-000  
 Date: MAY 2020

GULF INTRACOSTAL WATERWAY  
 CALOOSAHATCHEE RIVER  
 PINELLAS COUNTY, FLORIDA  
**HYDROGRAPHIC EXAM SURVEY FY20**  
**9-FOOT PROJECT**  
 STA. 190+00 THRU STA. 222+00 CUT P-2  
**PLAN**

Scale: AS SHOWN  
 Drawing no.  
**13**  
 SHEET 13 OF

MAP LABEL	AIDS TO NAVIGATION	PLANE COORDINATES		LATITUDE	LONGITUDE
		X	Y		
G*13*	DBN-13 (05/20)	438,937	11221,663	27°41'34.58"	82°40'16.60"





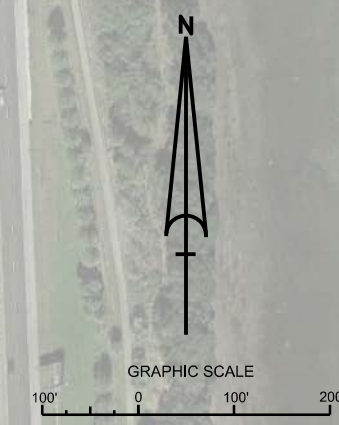

DEPARTMENT OF THE ARMY  
 JACKSONVILLE DISTRICT, CORPS OF ENGINEERS  
 JACKSONVILLE, FLORIDA

Checked By: GHR  
 Designed By: WRM  
 Drawn By: WRM  
 File No.: 20-114-00-000  
 Date: MAY 2020

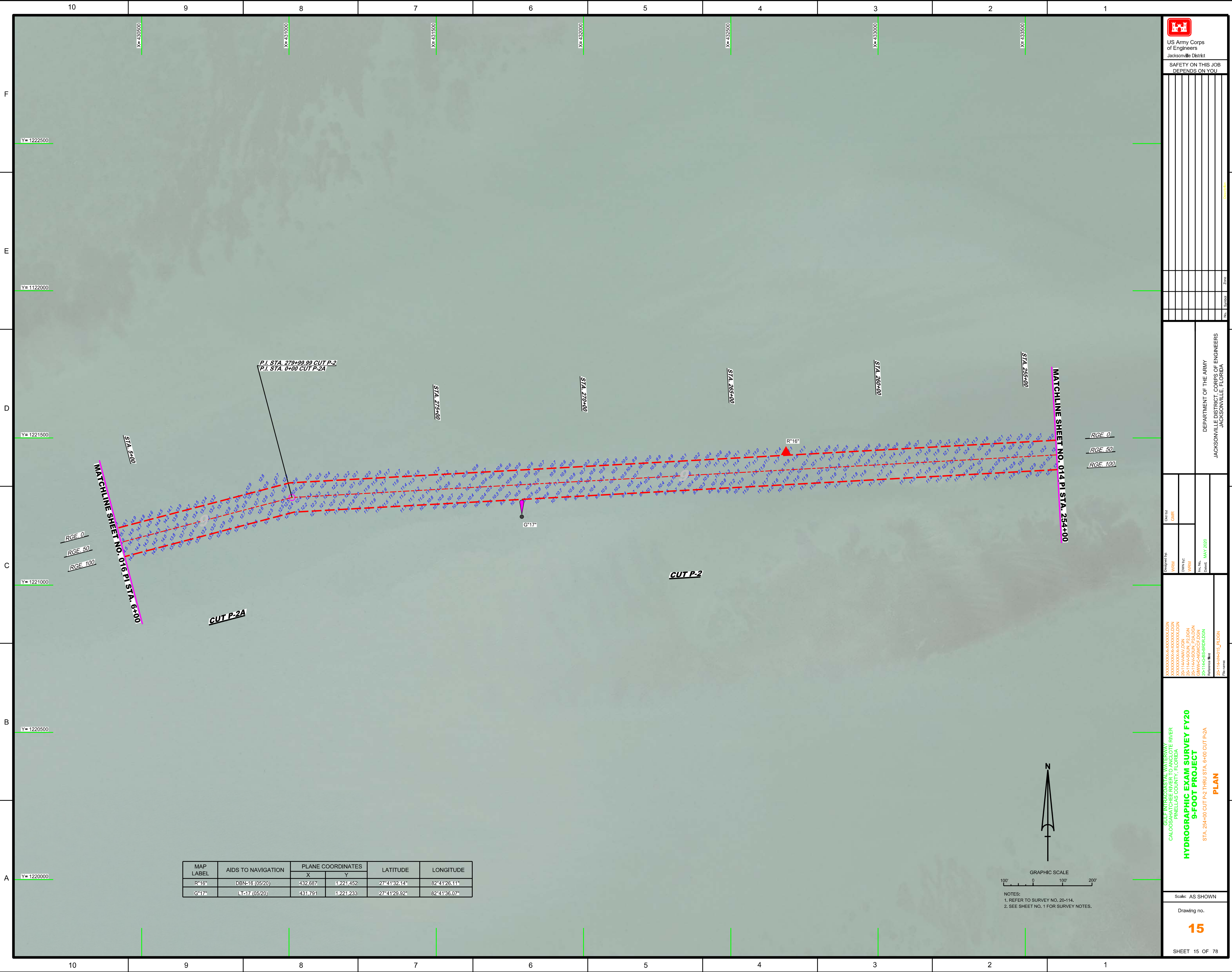
GULF INTRACOSTAL WATERWAY AT THE RIVER  
 CALOOSAHATCHEE COUNTY, FLORIDA  
**HYDROGRAPHIC EXAM SURVEY FY20**  
**9-FOOT PROJECT**  
 STA. 127+00 THRU STA. 148+38.59 CUT SC-3 AND  
 STA. 222+00 THRU STA. 244+00 CUT P-2  
**PLAN**

Scale: AS SHOWN  
 Drawing no. **14**  
 SHEET 14 OF 78

MAP LABEL	AIDS TO NAVIGATION	PLANE COORDINATES		LATITUDE	LONGITUDE
		X	Y		
G*13A	DBN-13A (05/20)	435,187	1,221,344	27°41'31.21"	82°40'58.30"
R*14	DBN-14 (05/20)	434,971	1,221,592	27°41'33.56"	82°41'00.71"
G*15	L*15 (05/20)	434,320	1,221,354	27°41'31.26"	82°41'07.94"



NOTES:  
 1. REFER TO SURVEY NO. 20-114.  
 2. SEE SHEET NO. 1 FOR SURVEY NOTES.



US Army Corps  
of Engineers  
Jacksonville District  
SAFETY ON THIS JOB  
DEPENDS ON YOU

DEPARTMENT OF THE ARMY  
JACKSONVILLE DISTRICT, CORPS OF ENGINEERS  
JACKSONVILLE, FLORIDA

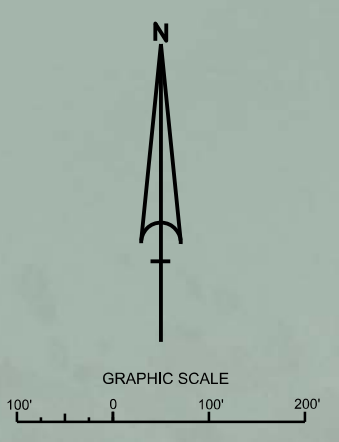
Checked by: GHR  
Designed by: WRM  
Drawn by: WRM  
Plot Date: MAY 2020  
Drawing No. 15

XXXXXXXXXXXXXXXXXXXX.DGN  
XXXXXXXXXXXXXXXXXXXX.DGN  
XXXXXXXXXXXXXXXXXXXX.DGN  
20-11A-001A\_P2.DGN  
20-11A-001A\_P2.DGN  
20-11A-001A\_P2.DGN  
20-11A-001A\_P2.DGN  
20-11A-001A\_P2.DGN  
Reference files:  
20-11A-001A\_P2.DGN

GULF INTRACOASTAL WATERWAY PROJECT  
CALOOSAHATCHEE RIVER  
PINELLAS COUNTY, FLORIDA  
**HYDROGRAPHIC EXAM SURVEY FY20**  
**9-FOOT PROJECT**  
STA. 254+00 CUT P-2 THRU STA. 6+00 CUT P-2A  
**PLAN**

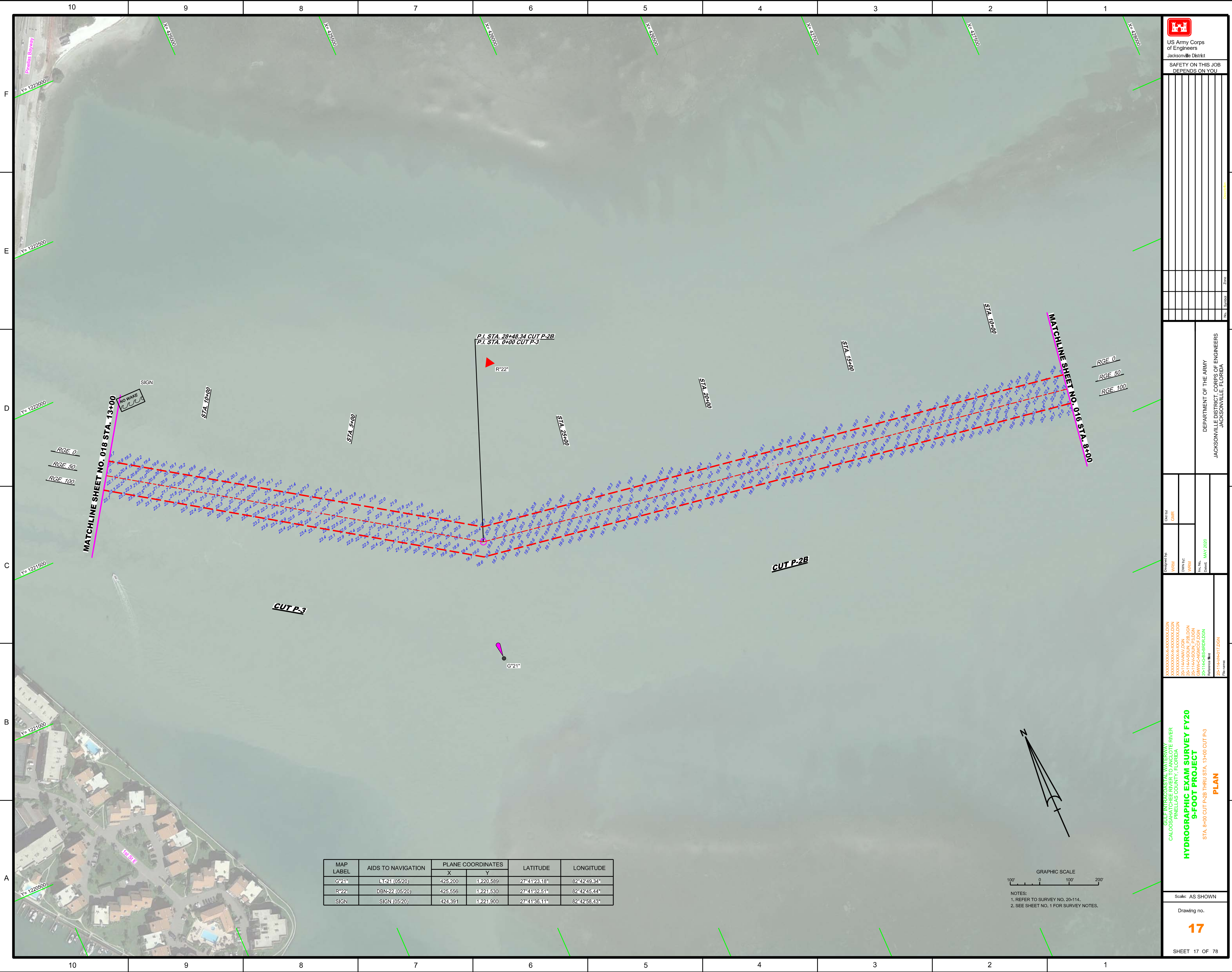
Scale: AS SHOWN  
Drawing no.  
**15**  
SHEET 15 OF 78

MAP LABEL	AIDS TO NAVIGATION	PLANE COORDINATES		LATITUDE	LONGITUDE
		X	Y		
R*16"	DBN-16 (05/20)	432.687	1,221,452	27°41'32.14"	82°41'26.11"
G*17"	LT-17 (05/20)	431.791	1,221,233	27°41'29.92"	82°41'36.07"





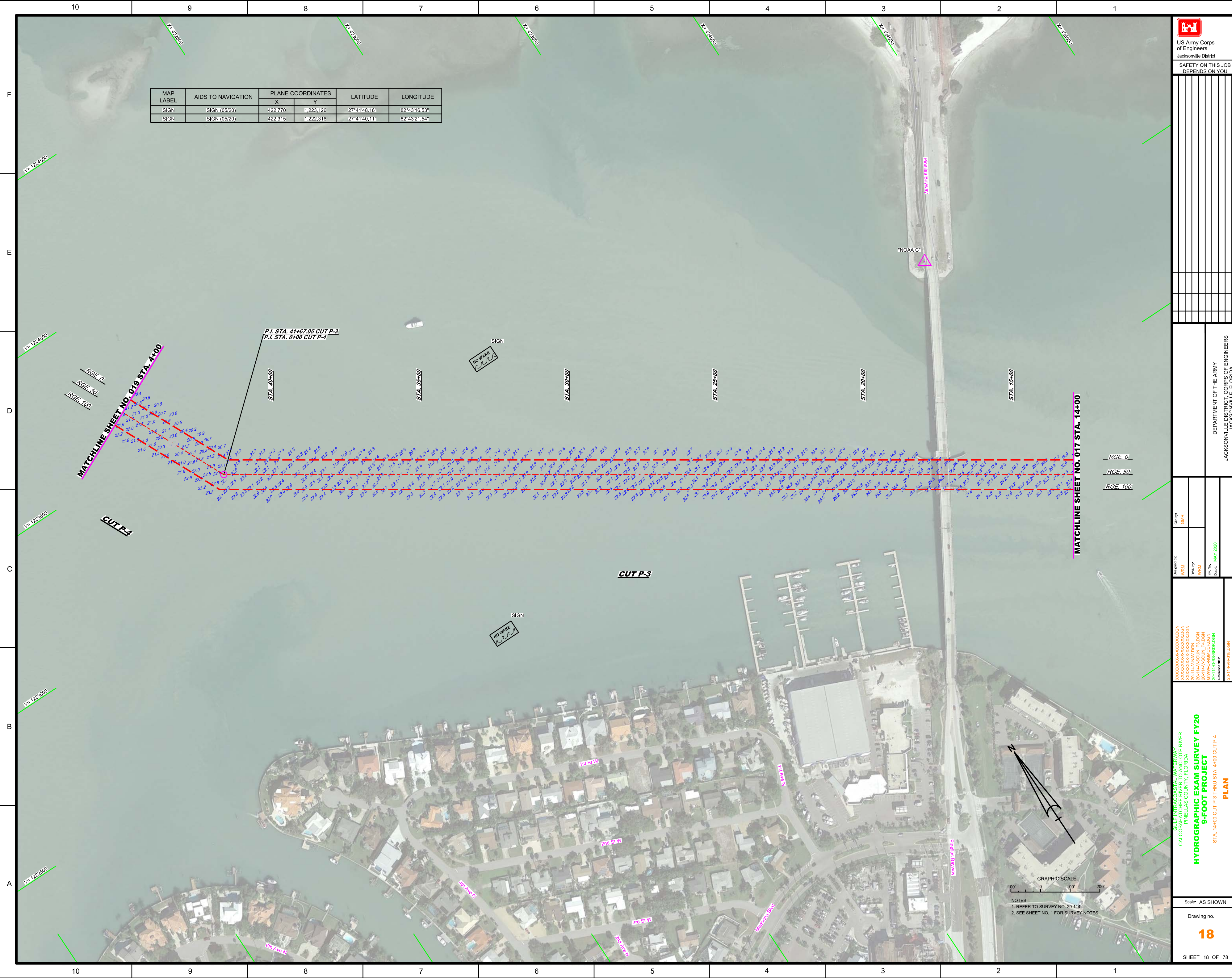




MAP LABEL	AIDS TO NAVIGATION	PLANE COORDINATES		LATITUDE	LONGITUDE
		X	Y		
G*21*	LT-21 (0520)	425200	1,220,589	27°41'23.18"	82°42'49.34"
R*22	DBN-22 (0520)	425556	1,221,530	27°41'32.51"	82°42'45.44"
SIGN	SIGN (0520)	424391	1,221,900	27°41'36.11"	82°42'58.43"



NOTES:  
 1. REFER TO SURVEY NO. 20-114.  
 2. SEE SHEET NO. 1 FOR SURVEY NOTES.



MAP LABEL	AIDS TO NAVIGATION	PLANE COORDINATES		LATITUDE	LONGITUDE
		X	Y		
SIGN	SIGN (0520)	422,770	1,223,126	27°41'48.16"	82°43'16.53"
SIGN	SIGN (0520)	422,315	1,222,316	27°41'40.11"	82°43'21.54"

US Army Corps of Engineers  
Jacksonville District  
SAFETY ON THIS JOB DEPENDS ON YOU

DEPARTMENT OF THE ARMY  
JACKSONVILLE DISTRICT, CORPS OF ENGINEERS  
JACKSONVILLE, FLORIDA

Designed by: WRM  
Drawn by: WRM  
Checked by: WRM  
Date: MAY 2020

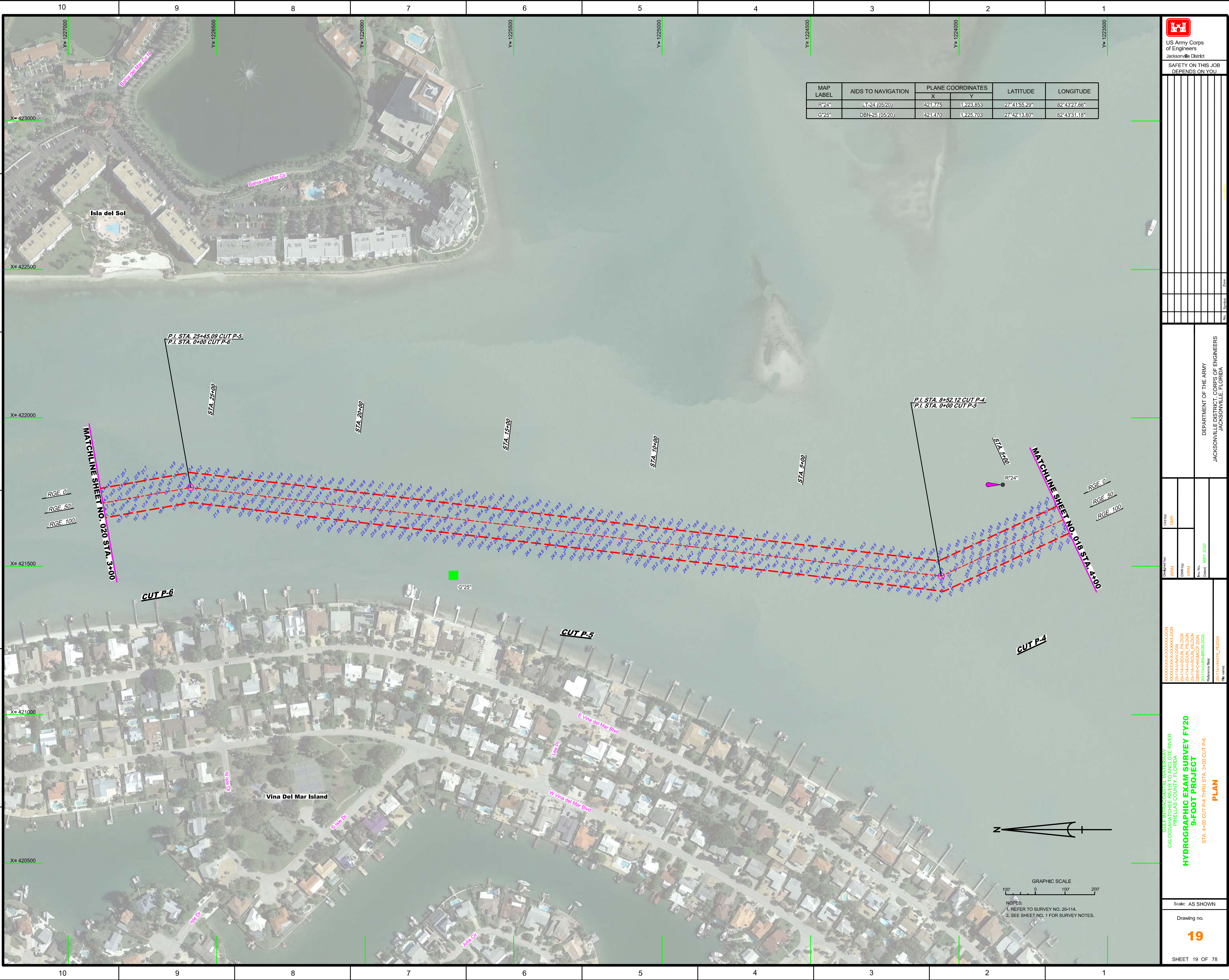
XXXXXXXXXXXXXXXXXXXXXXX  
XXXXXXXXXXXXXXXXXXXXXXX  
XXXXXXXXXXXXXXXXXXXXXXX  
XXXXXXXXXXXXXXXXXXXXXXX  
XXXXXXXXXXXXXXXXXXXXXXX  
XXXXXXXXXXXXXXXXXXXXXXX  
XXXXXXXXXXXXXXXXXXXXXXX  
XXXXXXXXXXXXXXXXXXXXXXX  
XXXXXXXXXXXXXXXXXXXXXXX

**HYDROGRAPHIC EXAM SURVEY FY20 9-FOOT PROJECT**  
PLAN  
STA. 14+00 CUT P-3 THRU STA. 4+00 CUT P-4

Scale: AS SHOWN  
Drawing no. **18**  
SHEET 18 OF 78

GRAPHIC SCALE  
0 100 200

NOTES:  
1. REFER TO SURVEY NO. 20-114.  
2. SEE SHEET NO. 1 FOR SURVEY NOTES.



MAP LABEL	AIDS TO NAVIGATION	PLANE COORDINATES		LATITUDE	LONGITUDE
		X	Y		
R-24"	LT-24 (05/20)	421,775	1,223,853	27°41'55.29"	82°43'27.66"
G-25"	DBN-25 (05/20)	421,470	1,225,703	27°42'13.60"	82°43'31.18"

**US Army Corps of Engineers**  
Jacksonville District

SAFETY ON THIS JOB  
DEPENDS ON YOU

---

DEPARTMENT OF THE ARMY  
JACKSONVILLE DISTRICT, CORPS OF ENGINEERS  
JACKSONVILLE, FLORIDA

---

GULF INTRACOSTAL WATERWAY  
CALOOSAHATCHEE RIVER  
PINELLAS COUNTY, FLORIDA

**HYDROGRAPHIC EXAM SURVEY FY20**  
**9-FOOT PROJECT**  
PLAN

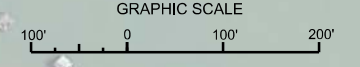
STA. 4+00 CUT P-4 THRU STA. 3+00 CUT P-6

---

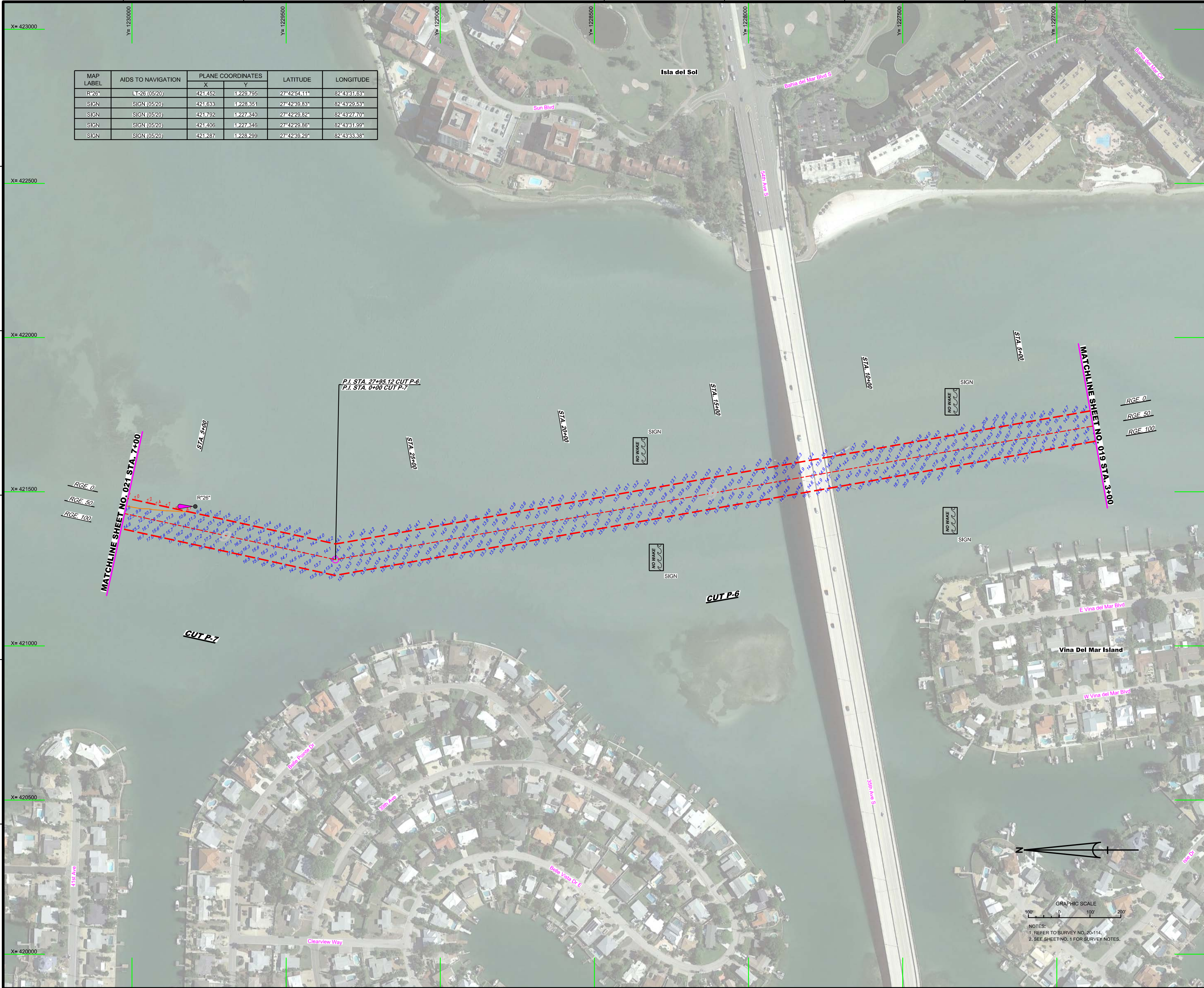
Scale: AS SHOWN

Drawing no.  
**19**

SHEET 19 OF 78



NOTES:  
1. REFER TO SURVEY NO. 20-114.  
2. SEE SHEET NO. 1 FOR SURVEY NOTES.



MAP LABEL	AIDS TO NAVIGATION	PLANE COORDINATES		LATITUDE	LONGITUDE
		X	Y		
R*26	LT*26 (05/20)	421,452	1,223,795	27°42'54.11"	82°43'31.63"
SIGN	SIGN (05/20)	421,633	1,223,351	27°42'39.83"	82°43'29.53"
SIGN	SIGN (05/20)	421,792	1,227,340	27°42'23.82"	82°43'27.0"
SIGN	SIGN (05/20)	421,406	1,227,346	27°42'23.86"	82°43'31.99"
SIGN	SIGN (05/20)	421,287	1,228,299	27°42'39.29"	82°43'33.38"

US Army Corps of Engineers  
 Jacksonville District  
 SAFETY ON THIS JOB DEPENDS ON YOU

No.	Symbol	Zone

DEPARTMENT OF THE ARMY  
JACKSONVILLE DISTRICT, CORPS OF ENGINEERS  
JACKSONVILLE, FLORIDA

Check By: GHR  
 Designed By: WRM  
 Drawn By: WRM  
 File No.: 20-114-098.DGN  
 Date: MAY 2020

Check: MAY 2020

GULF INTRACOASTAL WATERWAY - THE RIVER  
 PINELLAS COUNTY, FLORIDA  
**HYDROGRAPHIC EXAM SURVEY FY20**  
**9-FOOT PROJECT**  
 STA. 3+00 CUT P-6 THRU STA. 7+00 CUT P-7  
**PLAN**

Scale: AS SHOWN  
 Drawing no.  
**20**  
 SHEET 20 OF 78